

UPGRADE TO OAS

WHY AND HOW

FRANCESCO TISIOT

ANALYTICS TECH LEAD - RITTMAN MEAD

rittmanmead
A DATA AND ANALYTICS COMPANY





FRANCESCO TISIOT

ANALYTICS TECH LEAD

VERONA, ITALY



[HTTP://RITT.MD/FTISIOT](http://ritt.md/ftisiot)



[FT@RITTMANMEAD.COM](mailto:ft@rittmanmead.com)

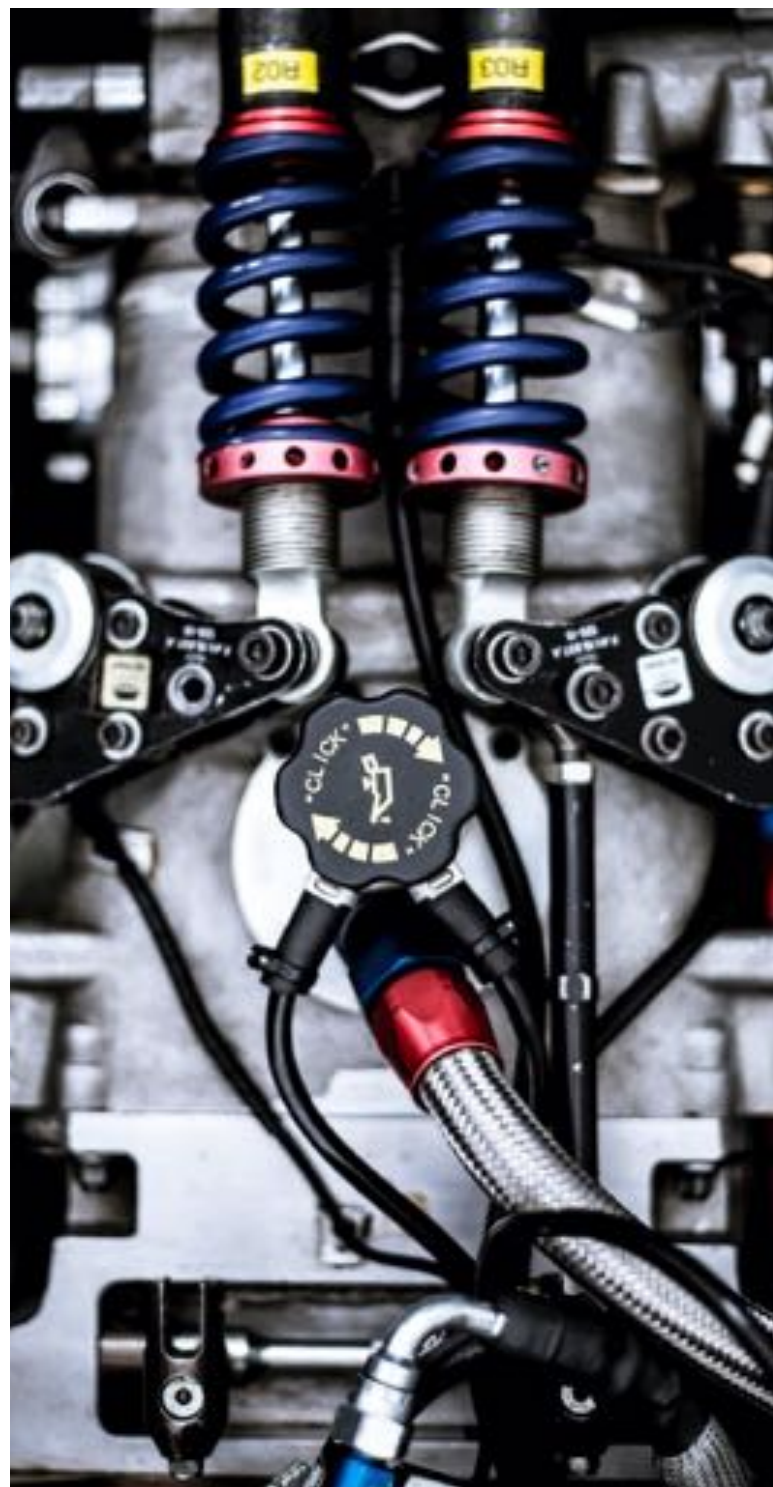


@FTISIOT



ORACLE ACE DIRECTOR





DATA ENGINEERING

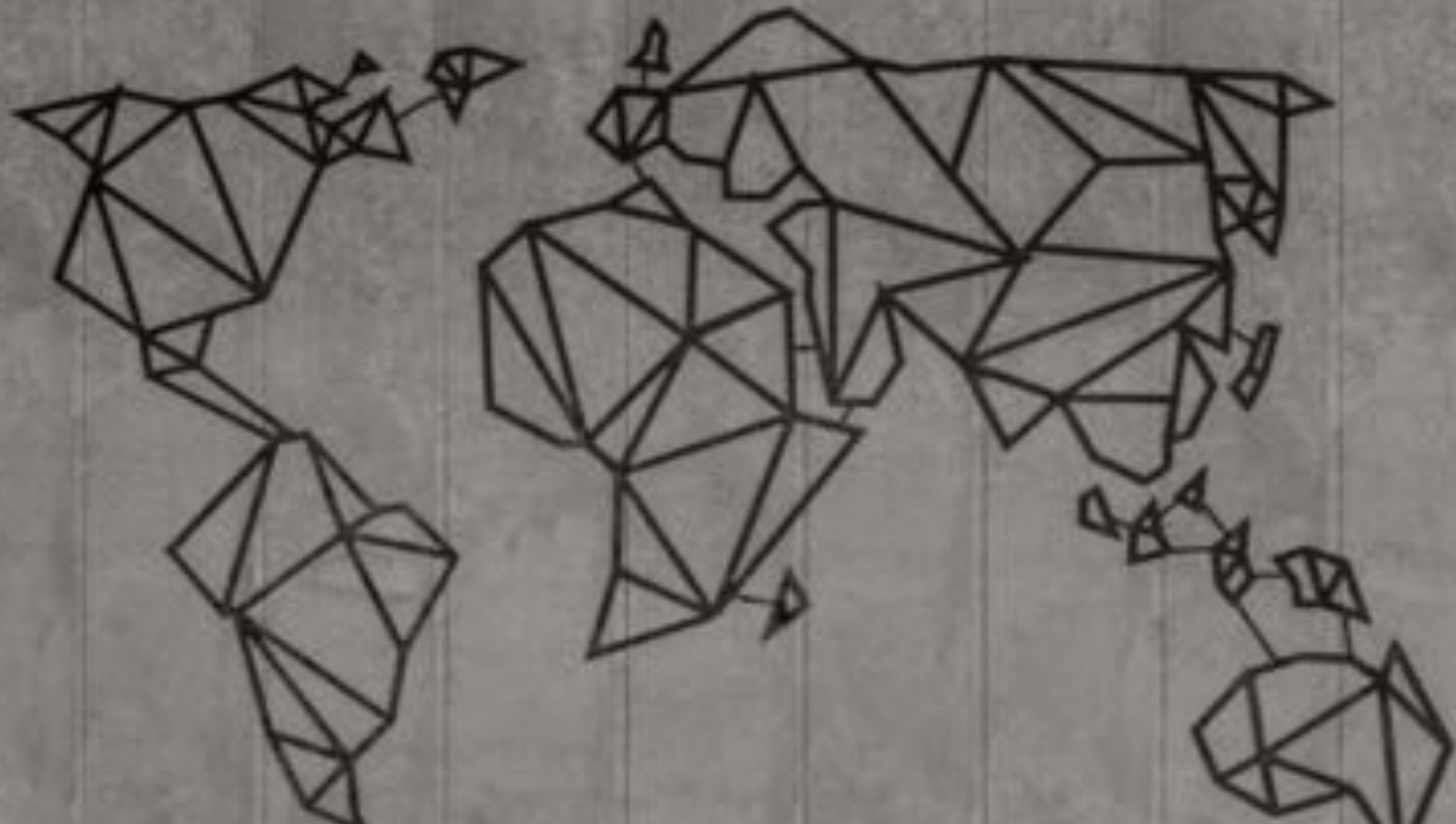


ANALYTICS



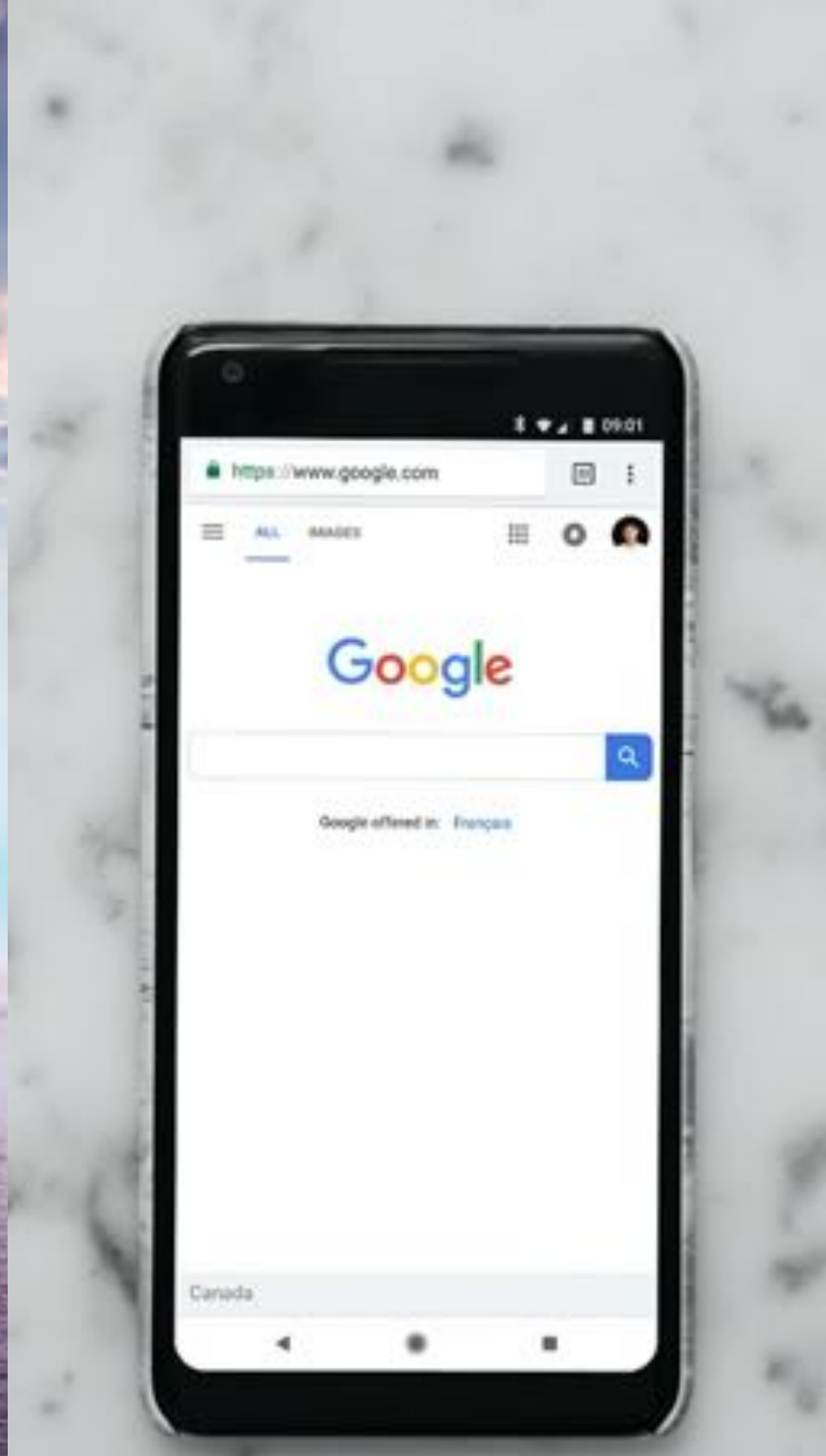
DATA SCIENCE

WHERE ARE YOU NOW?





OAC



12C



11G



10G

@FTISIOT

WHAT IS

OAS





ORACLE
ANALYTICS
SERVER

ORACLE ANALYTICS PRODUCT FAMILY



ORACLE ANALYTICS CLOUD

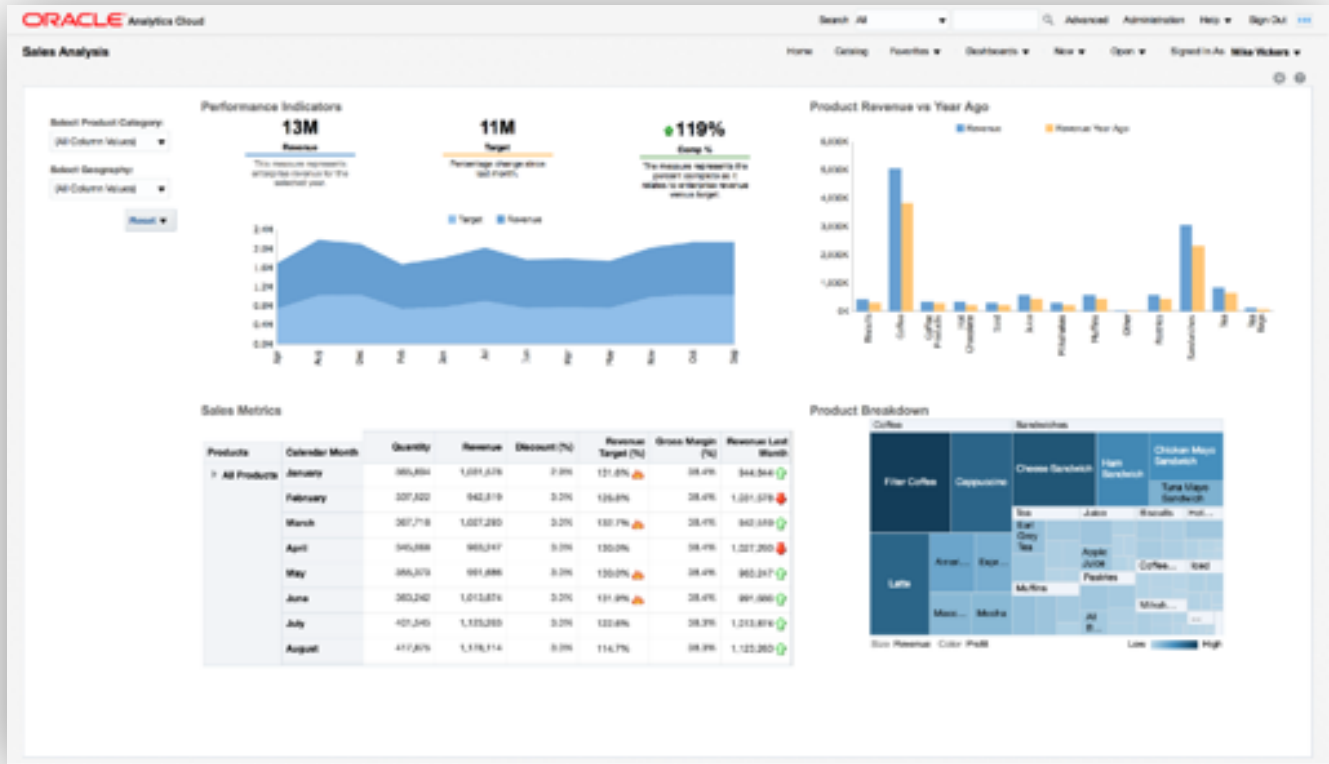


FUNCTIONS

OAC SUPPORTS **EVERY** TYPE OF ANALYTICS

CLASSIC

MODERN



CLASSIC ENTERPRISE BI

- SIMILAR TO OBIEE 12c

- CENTRALLY MAINTAINED & GOVERNED
- SEMANTIC MODEL

- INTERACTIVE DASHBOARDS

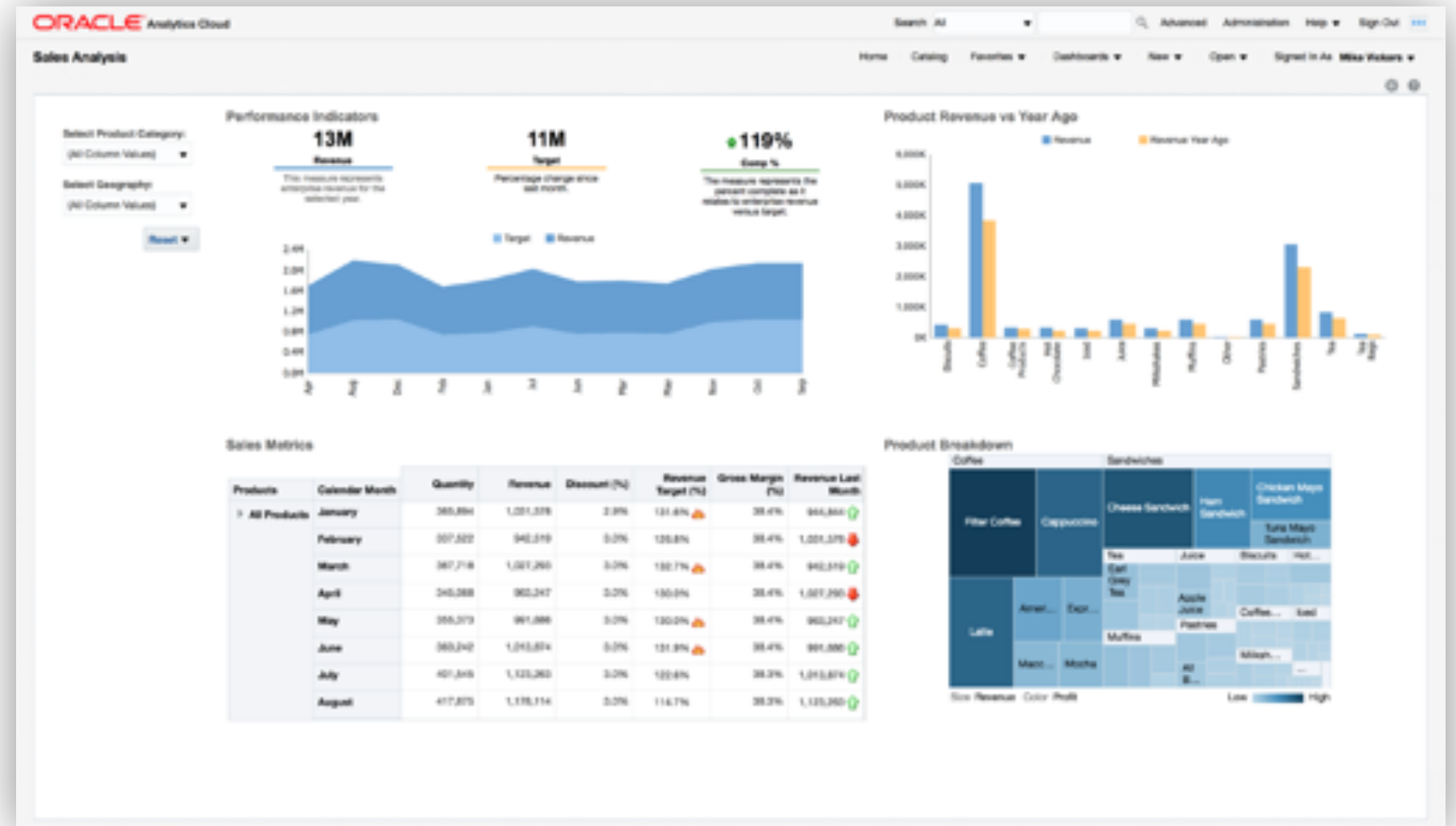
- KPI MEASUREMENT & MONITORING
- GUIDED NAVIGATION PATHS

- BI PUBLISHER

- HIGHLY FORMATTED, BURST OUTPUTS

- ACTION FRAMEWORK

- NAVIGATION ACTIONS
- SCHEDULED AGENTS



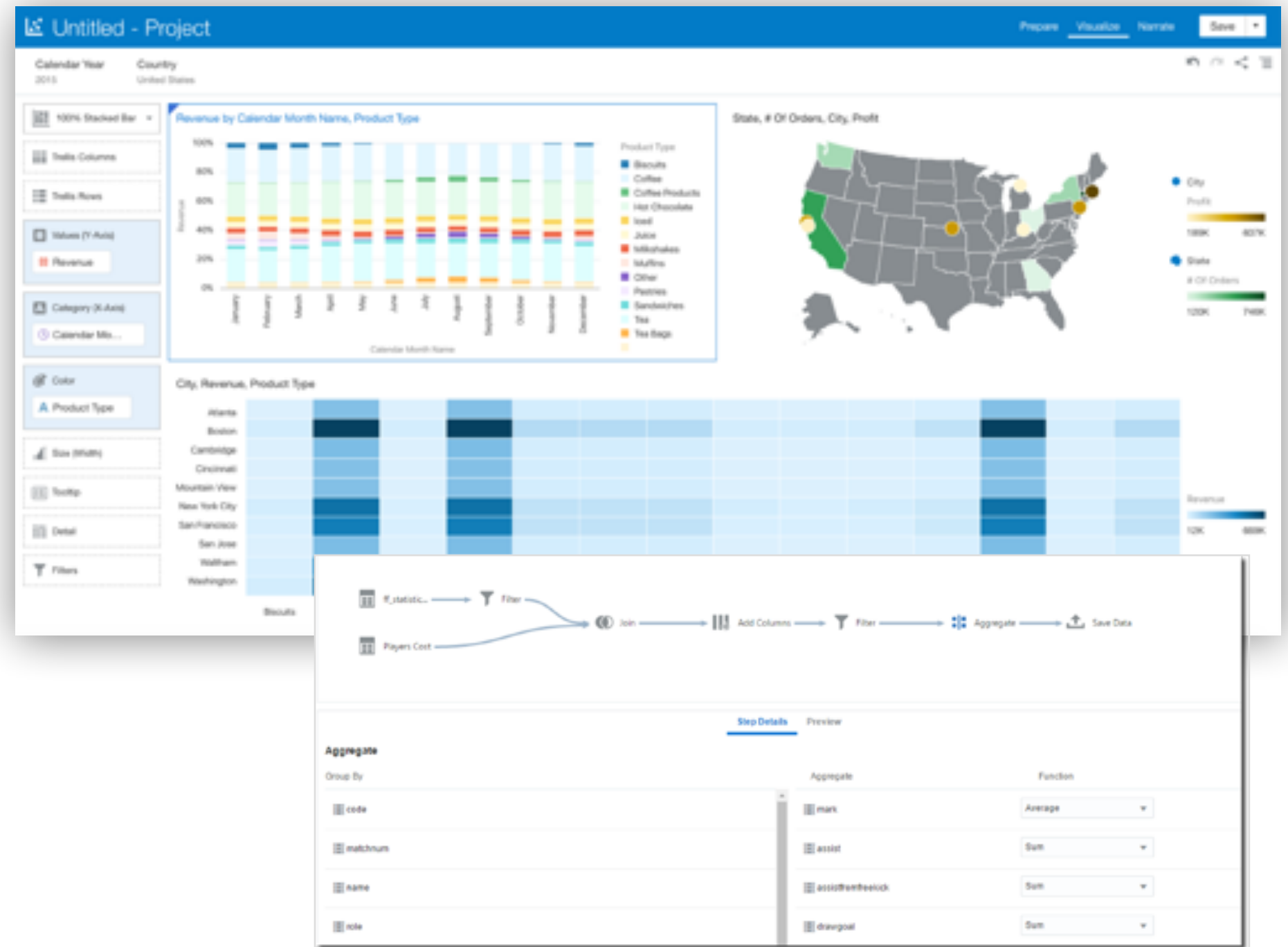
MODERN DATA DISCOVERY

• DATA PREPARATION

- ACQUIRE DATA
- CLEAN/ENRICH
- TRANSFORM
- REPEATABLE FLOWS

• DATA VISUALISATION

- CREATE VISUAL INSIGHTS RAPIDLY
- CONSTRUCT NARRATED STORYBOARDS
- SHARE FINDINGS



HYBRID ANALYTICS

CENTRALISED
REPORTING

UNIQUE
SOURCE OF
TRUTH

SPECIFIC ACCESS
CONTROL

FREE DISCOVERY

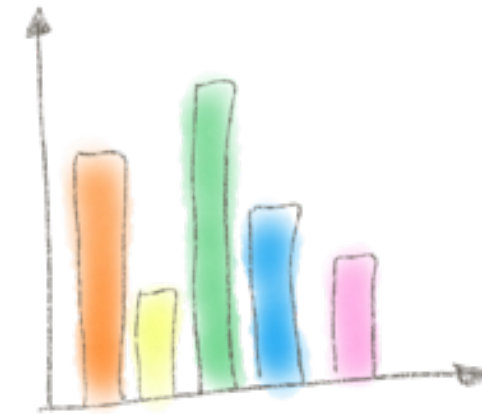
RAW DATA TO
INSIGHTS

DATA
ENRICHMENT
AND CLEANING

WHAT'S NEW IN OAS?



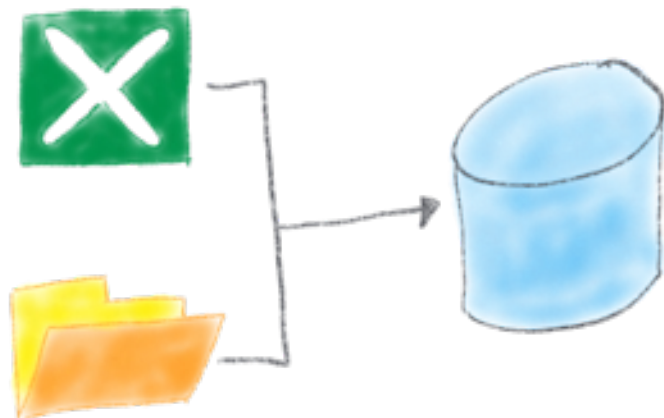
LICENSING



VISUALIZATION



AUGMENTED ANALYTICS
MACHINE LEARNING



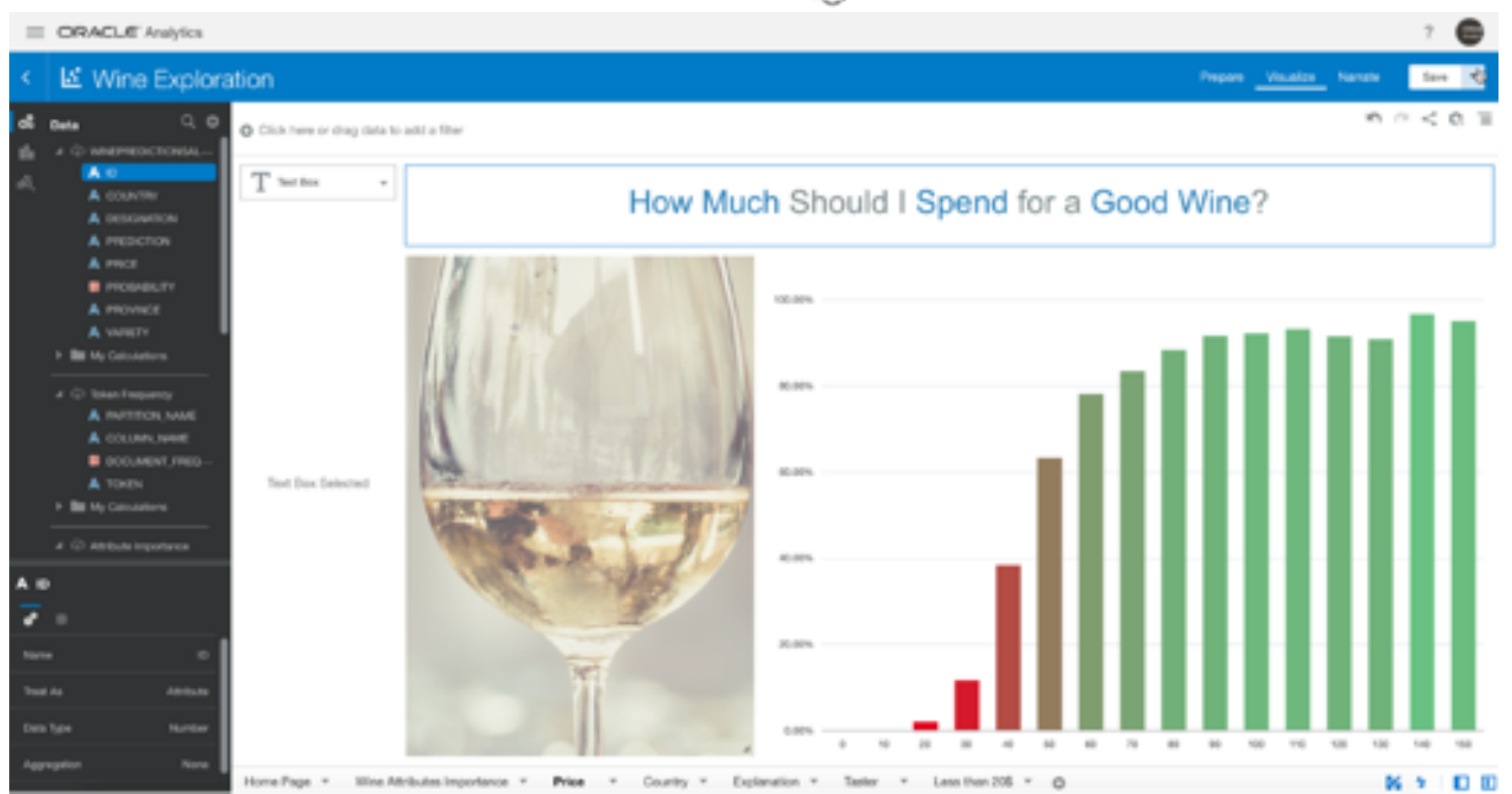
DATA FLOWS



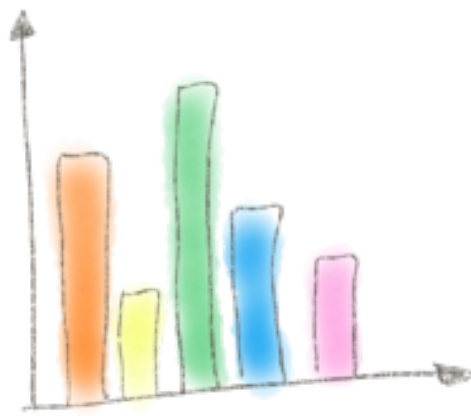
SETTINGS



LICENSING



ALL INCLUDED!



VISUALIZATIONS

Profit by Discount, Customer Segment



Profit by Product Category



of Customers by City_Country



Location Details...

Group...

Split...

Concatenate...

Replace...

Uppercase

Lowercase

Sentence Case

Create...

Edit...

Hide

Delete

west

south

center

DC+MetroZips

DemoBooth FloorPlan

Verona.geo

Your Data

Match

east	east
west	west
south	south
center	center
north	north

Profit by City_Province, Pro...

Grand Total

Subtotal

Total Rows Position

Total Columns Position

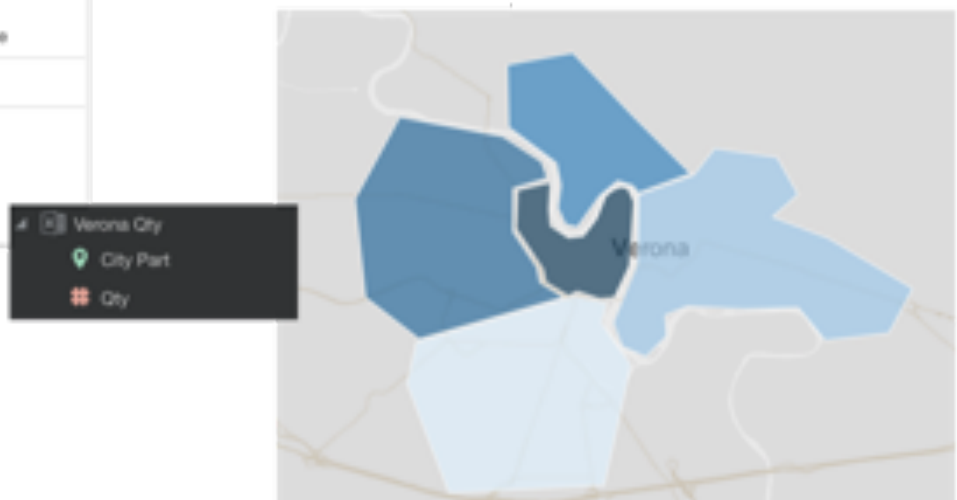
Grand Total Row Font

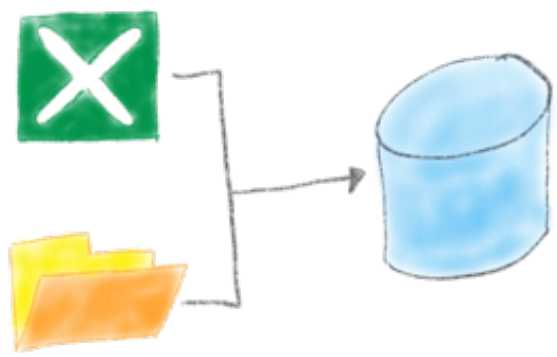
Grand Total Col Font

Cancel OK

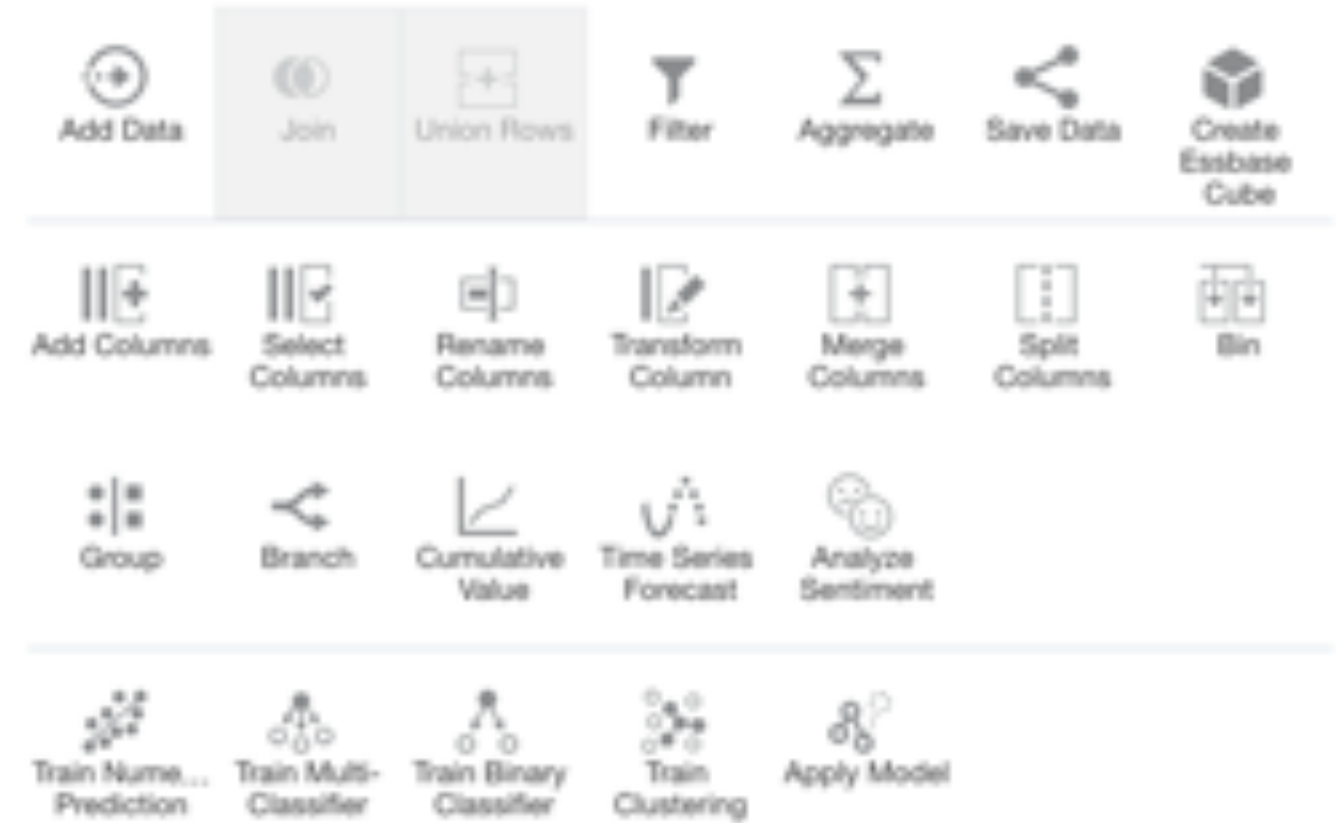
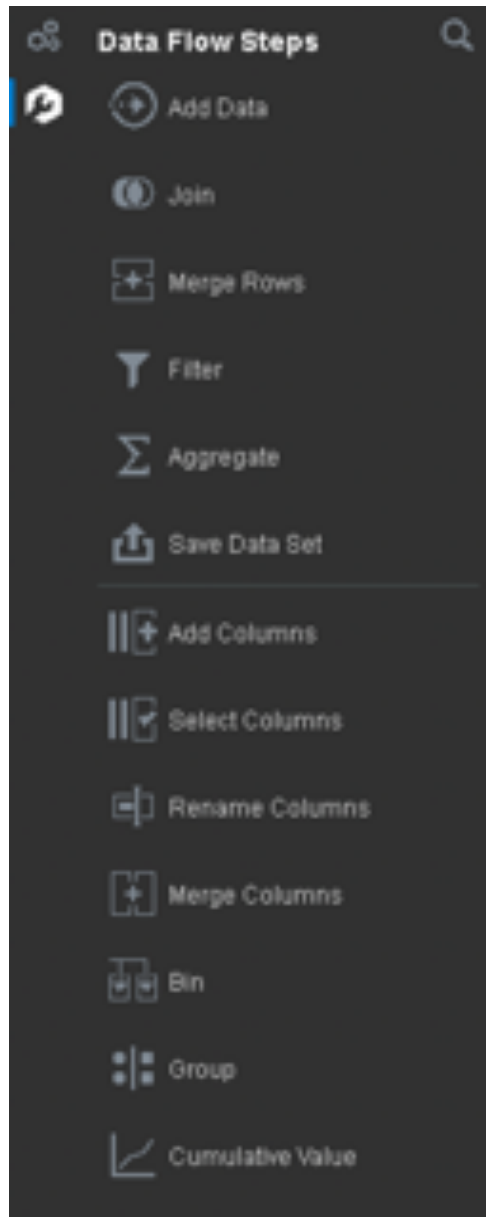
Profit by City_Province, Product Category, Product Sub Category

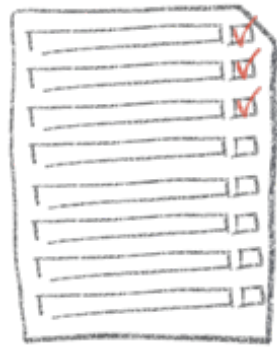
City_Province	Furniture Total	Furniture				Office Supplies Total	"Scissors, Rulers and Timmers"	Appliances
		Bookcases	Chairs & Chairmats	Office Furnishings	Tables			
Grand Total	156,630.45	-19,172.03	149,411.60	80,697.56	-54,306.68	413,406.65	-3,308.41	108,306.74
ACT	40.17	-14.77	-174.17	248.35	-19.24	4,712.02	6.56	2,803.12
Aichi	3,849.57	4,992.17	1,053.55	489.14	-2,665.29	363.10	3.90	386.79
Alabama	801.82		1,300.58	415.13	-913.89	3,117.43	-650.85	
Andhra Pradesh	-712.85	-1,382.42		646.94	22.63	619.24	-30.87	25.63
Aomori	1,481.70			1,016.47	465.23	10,486.02	29.85	2,667.88
Ar Riyaj	2,054.35		1,501.19	553.16		4,269.71	4.29	
Auvergne-Rhône-Alpes	8,412.91	-1,278.32	6,727.21	980.78	1,983.24	10,260.31	-61.02	5,294.07
Baja California	6,200.07		5,093.80	-6.67	1,112.94	639.19	-4.79	194.40
Bangkok	-808.96	-155.03	-312.50	765.19	-1,106.62	3,294.31	-169.21	2,199.07
Berlin	9,129.91	-109.29	2,336.28	-474.52	7,377.44	9,032.45	2.10	8,455.87
Bavaria	9,091.31	313.73	8,990.47	258.62	-471.51	-623.94	22.62	-574.75
Beijing	812.57		-141.52	250.57	703.52	871.88		-577.84
Bogota D.C.	1,737.01		3,107.22	-907.63	-462.58	2,350.42		660.12





DATA FLOWS





SETTINGS

Profit by City_Province, Product Category, Product Sub Category

		Furniture							
		Furniture Total	Bookcases	Chairs & Chairmats	Office Furnishings	Tables	Office Supplies Total	"Scissors, Rulers and Timmers"	Appliances
City_Province		Profit	Profit	Profit	Profit		Profit	Profit	
Grand Total	Rows	156,630.45	-19,172.03	149,411.60	80,697.56	-54,306.66	413,406.65	-3,308.41	108,306.74
Subtotal	Product Category								
Total Rows Position	Above	40.17	-14.77	-174.17	248.35	-19.24	4,712.02	6.56	2,803.12
Total Columns Position	Before	3,849.57	4,992.17	1,053.55	489.14	-2,665.29	363.10	3.90	386.79
Grand Total Row Font	Auto	801.82		1,300.58	415.13	-913.89	3,117.43	-650.85	
Grand Total Col Font	Auto	-712.85	-1,382.42		646.94	22.63	619.24	-30.	
	Andhra Pradesh	1,481.70			1,016.47	495.23	10,486.02	29.	
	Aomori	2,054.35		1,501.19	553.16		4,269.71	4.	
	Ar Riyāḍ	8,412.91	-1,278.32	6,727.21	980.78	1,983.24	10,260.31	-61.	
	Auvergne-Rhône-Alpes	6,200.07		5,093.80	-6.67	1,112.94	639.19	-4.	
	Baja California	-808.96	-155.03	-312.50	765.19	-1,106.62	3,294.31	-169.	
	Bangkok	9,129.91	-109.29	2,336.28	-474.52	7,377.44	9,032.45	2.	
	Bavaria	-936.15	-80.61		-3.62	-851.92	1,809.68		
	Beijing	9,091.31	313.73	8,990.47	256.62	-471.51	-623.94	22.	
	Berlin	812.57		-141.52	250.57	703.52	871.88		
	Bogota D.C.	1,737.01		3,107.22	-907.63	-462.58	2,350.42		

ORACLE Analytics Console

Visualizations and Sharing

- Maps
- Extensions
- Social

Configuration and Administration

- Search Index
- Safe Domains
- Users and Roles
- Snapshots
- Connections
- Virus Scanner
- Session and Query Cache
- Issue SQL
- Monitor Deliveries
- Mail Server
- System Settings
- Remote Data Connectivity



AUGMENTED ANALYTICS

DATA ENRICHMENT

SUGGESTIONS

NATURAL

LANGUAGE

PROCESSING



ONE-CLICK

ADVANCED

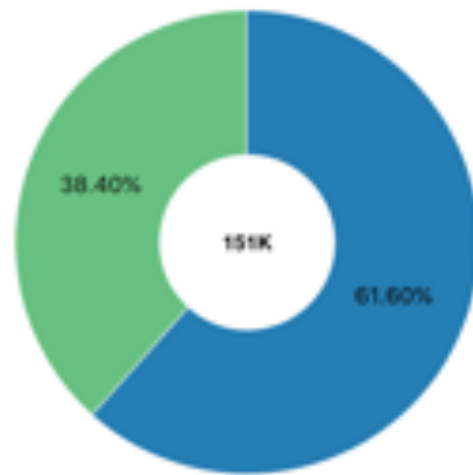
ANALYTICS

EXPLAIN



EXPLAIN

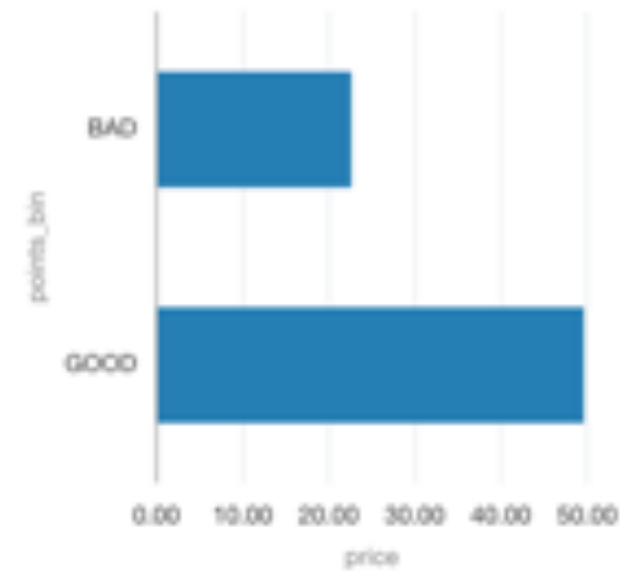
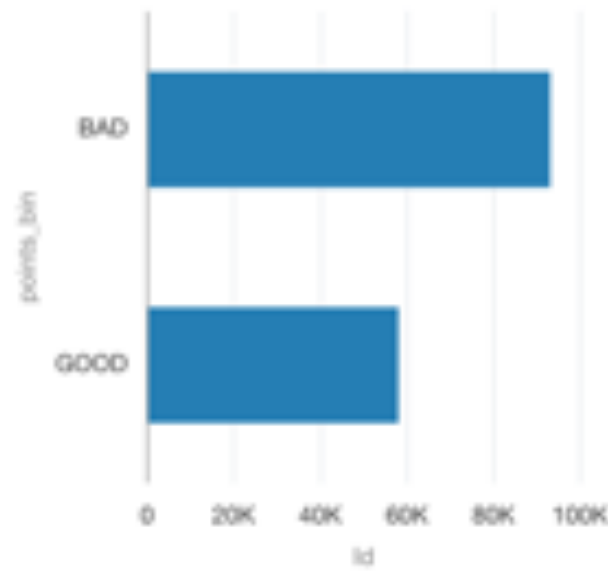
Basic facts about points_bin



points_bin is a Text Attribute with 2 unique values across 150935 rows (100%). The most common points_bin is BAD (62%) and the least common is GOOD (38%).

The charts below summarize the values of points_bin by the measures in this data set. Click the checkmarks above any of the visuals to add them to your project when done.

points_bin ■ BAD ■ GOOD



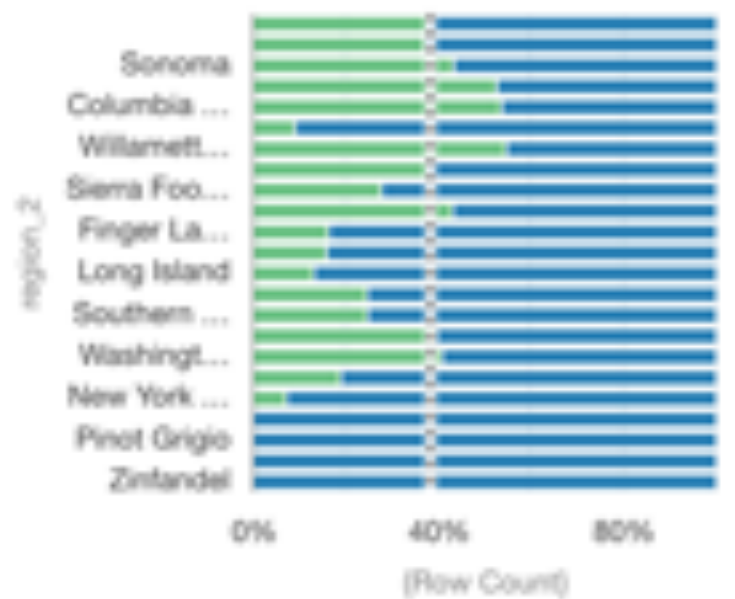


EXPLAIN

Key Drivers of points_bin

Based on points_bin: **All Values** the 2 attributes that are most strongly correlated are: **region_2, country**

The charts below show the distribution of points_bin values across each of the key drivers (sorted by descending row count). Click the checkmarks above any of the visuals to add them to your project when done.



points_bin GOOD BAD ... Constant



points_bin GOOD BAD

... Constant



MACHINE LEARNING

WINE_TR...

Add Data Join Union Rows Filter Aggregate Save Data Create Essbase Cube

Add Columns Select Columns Rename Columns Transform Column Merge Columns Split Columns

Group Branch Cumulative Value Time Series Forecast Analyze Sentiment

Train Name... Prediction Train Multi-Classifer Train Binary Classifier Train Clustering Apply Model

Select Train Two-Classification Mo

- Random Forest for model training
- SVM for Classification
- Logistic Regression for model training
- CART for model training
- Neural Network for Classification
- Naive Bayes for Classification

Train Binary Classifier

Model Training Script **Naive Bayes for Classification**

Target **Select a column**
target, the target(label) to learn/predict

Positive Class in Target **Yes**
Positive class in the target value. Default is Yes.

Categorical Column Imputation **Most Frequent**
The mode method for categorical features to fill NA. Two options: mostFrequent and leastFrequent. Default is mostFrequent.

Numerical Column Imputation **Mean**
The mode method for numeric features to fill NA. Four options: mean, max, min, median. Default is mean.

Encoding Method **Indexer**
Encoding method.

Maximum Null Value Percent **80**
Maximum Null Value Percent

Cancel OK



COMPARE - CLASSIFICATION

Predicted Values

	0.0	1.0	Total
Actual Values 0.0	40439	471	40910 (90%)
1.0	3761	866	4627 (10%)
Total	44200 (97%)	1337 (3%)	45537 (100%)



USE ON THE FLY OR WITHIN A DATAFLOW

+ Add Data Set...
Create Scenario...
Add Create Scenario - Select Model

Type	Name
	BinaryCart2
	BinaryCart1
	BinaryLogistic1
	ELN1
	LR2
	LR1

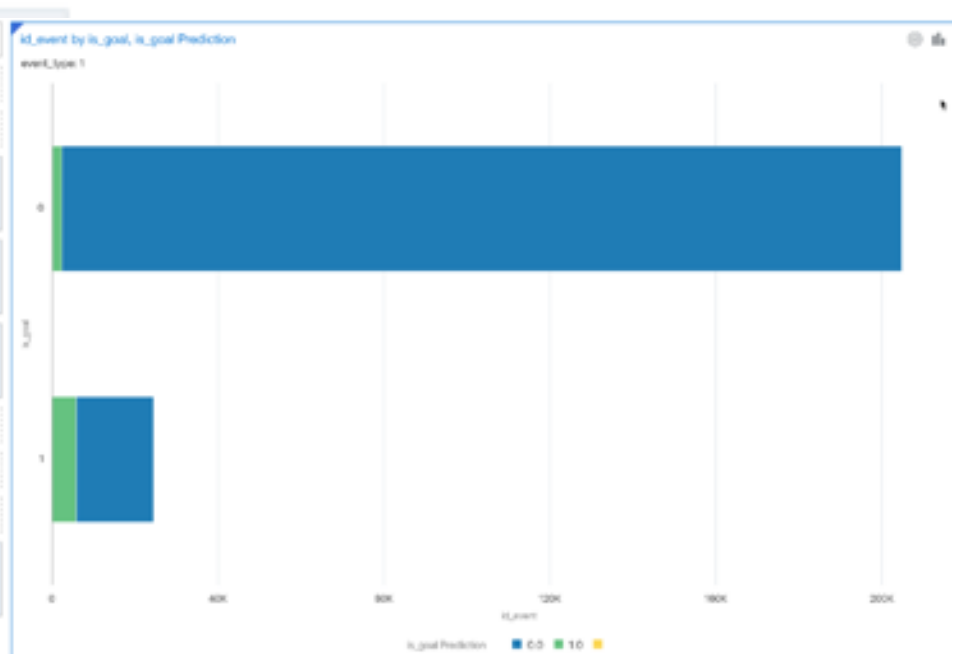
Edit Scenario - Map Your Data

Select which Data Set you want to use with the Model
Data Set:

For each model input listed on the left, select a corresponding data element from your project

Model Input	Map To
bodypart	bodypart
location	location
player	player
situation	situation
is_goal	is_goal

Required Fields



WHY OAS



WHY MOVING FROM OBIEE TO OAS?



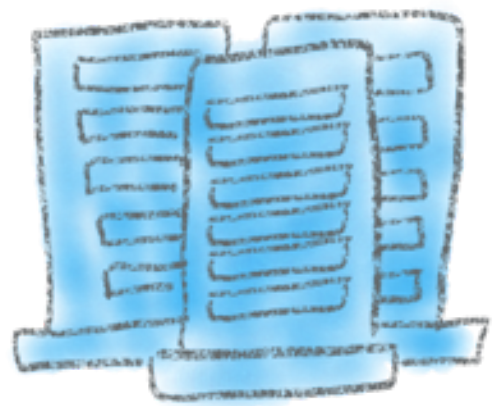
SUPPORT



NEW FEATURES



FULL CONTROL



STAY IN
MY DATACENTER



CUSTOMISATIONS

LIMITATIONS

SCORECARD AND STRATEGY MANAGEMENT

DESUPPORTED AND NO LONGER AVAILABLE

ORACLE MARKETING SEGMENTATION

BI SCHEDULER JOB MANAGER

ACT AS

BISQLGROUPPROVIDER

SYSTEM SESSION VARIABLES

DEPRECATED
DEPRECATED
DEPRECATED
DEPRECATED
DEPRECATED

STILL THERE!

INSTALLATION



PRE-REQUISITES

OS

LINUX 6+

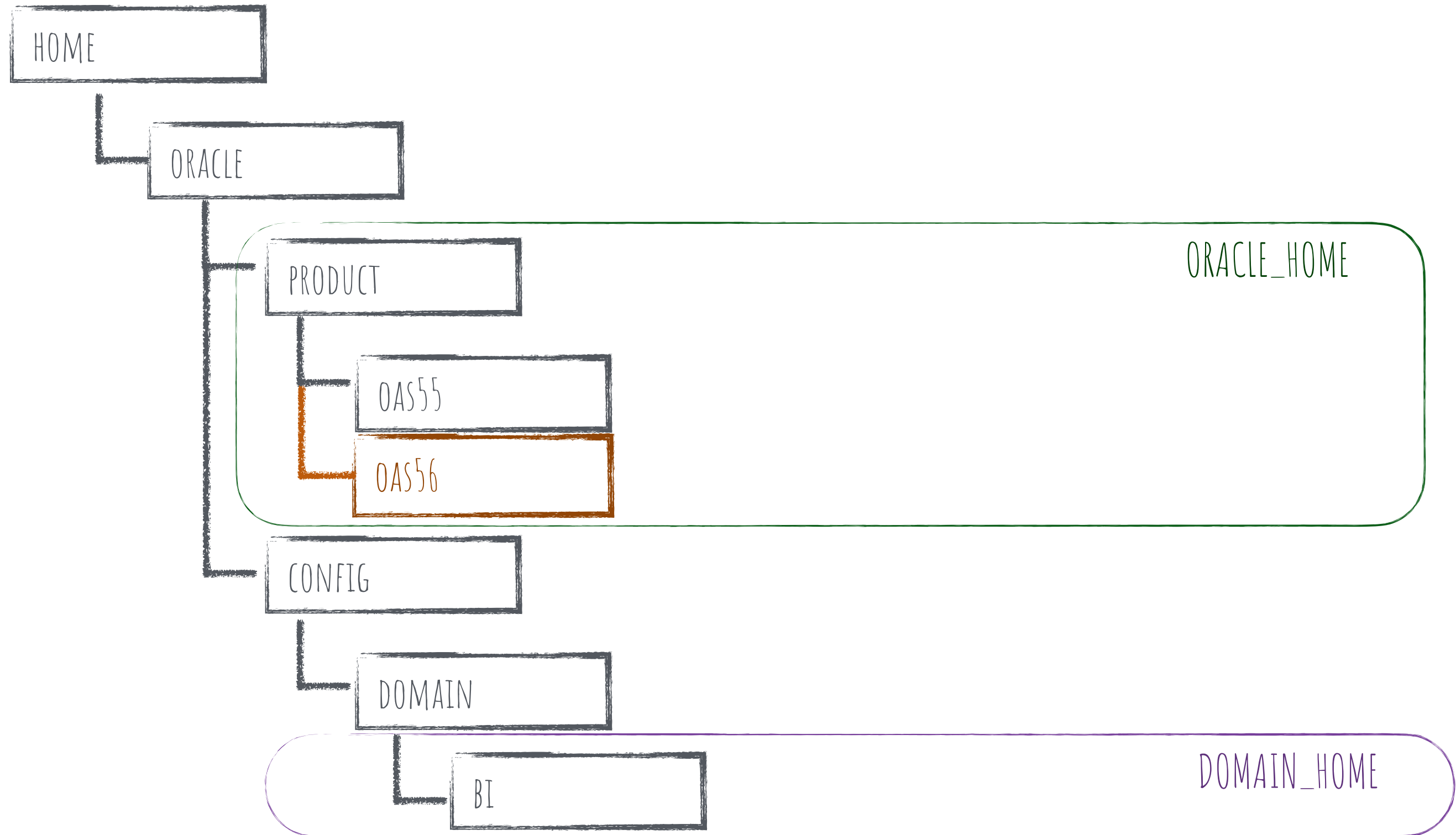
DB

ORACLE 11.2+

JDK

1.8 8U211+

FOLDER STRUCTURE



INSTALLATION

1 JDK

2 FUSION MIDDLEWARE

3 OAS

4 CREATE RCU

5 OAS CONFIGURATION

UPGRADE



UPGRADE PATH

OAS



OBIEE 12.2.1.4

IN-PLACE

< OBIEE 12.2.1.4

OUT OF PLACE

UPGRADE PATH - 12C

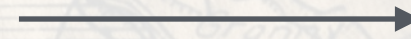
OBIEE

12.2.1.2.0



OBIEE

12.2.1.4.0



OAS

UPGRADE PATH - 11G

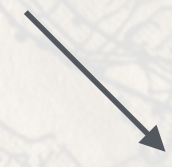
OBIEE

11.1.1.7



OBIEE

11.1.1.9+



OAS

ORACLE ANALYTICS SERVER



IN - PLACE

VS

OUT-OF-PLACE



KEEP SECURITY SETTINGS

KEEP COMPONENT CONFIGURATIONS

INHERIT OLD INSTALLATION

OVERWRITE EXISTING ENVIRONMENT

REVIEW AND REDO SECURITY SETTINGS

REDO COMPONENT CONFIGURATIONS

RESTART FROM CLEAN STATE

NEW ENVIRONMENT BUILT ALONGSIDE

FREE OAS ASSESSMENT: [HTTP://RITT.MD/OAS](http://ritt.md/oas)

FIX PRICE OAS UPGRADE: [HTTP://RITT.MD/OAS-FIX-PRICE-UPGRADE](http://ritt.md/oas-fix-price-upgrade)



BACKUP

IN-PLACE UPGRADE

1 UPGRADE SCHEMAS

-READINESS

2 BACKUP MAPVIEWERCONFIG.XML

3 BACKUP DOMAIN

4 RECONFIGURE DOMAIN

5 UPGRADE DOMAIN COMPONENTS

-READINESS

6 START SERVERS

IN-PLACE - POST UPGRADE TASKS

1 INTERNAL SSL

2 MIGRATE CATALOG GROUPS

3 HTML MARKUP

OUT-OF-PLACE

1 11.1.1.9

2 CREATE IIG EXPORT BUNDLE

3 IMPORT THE BUNDLE IN OAS

OUT-OF-PLACE - POST UPGRADE TASKS

1 CONFIGURATIONS

2 SECURITY

3 CUSTOM IMAGES/MESSAGES

OAS KNOWN BUGS

2644363.1

AFTER UPGRADE TO ORACLE ANALYTICS SERVER (OAS), MODIFYING **SYSTEM SETTINGS** FAILS WITH "**PROPERTY UPDATE FAILED DUE TO UNAUTHORIZED ACCESS**"

2645310.1

AFTER SNAPSHOT (BAR) IMPORT IN ORACLE ANALYTICS SERVER (OAS), **DATA FLOWS** FAIL WITH '**400 - BAD REQUEST ..**' ERROR

KERBEROS

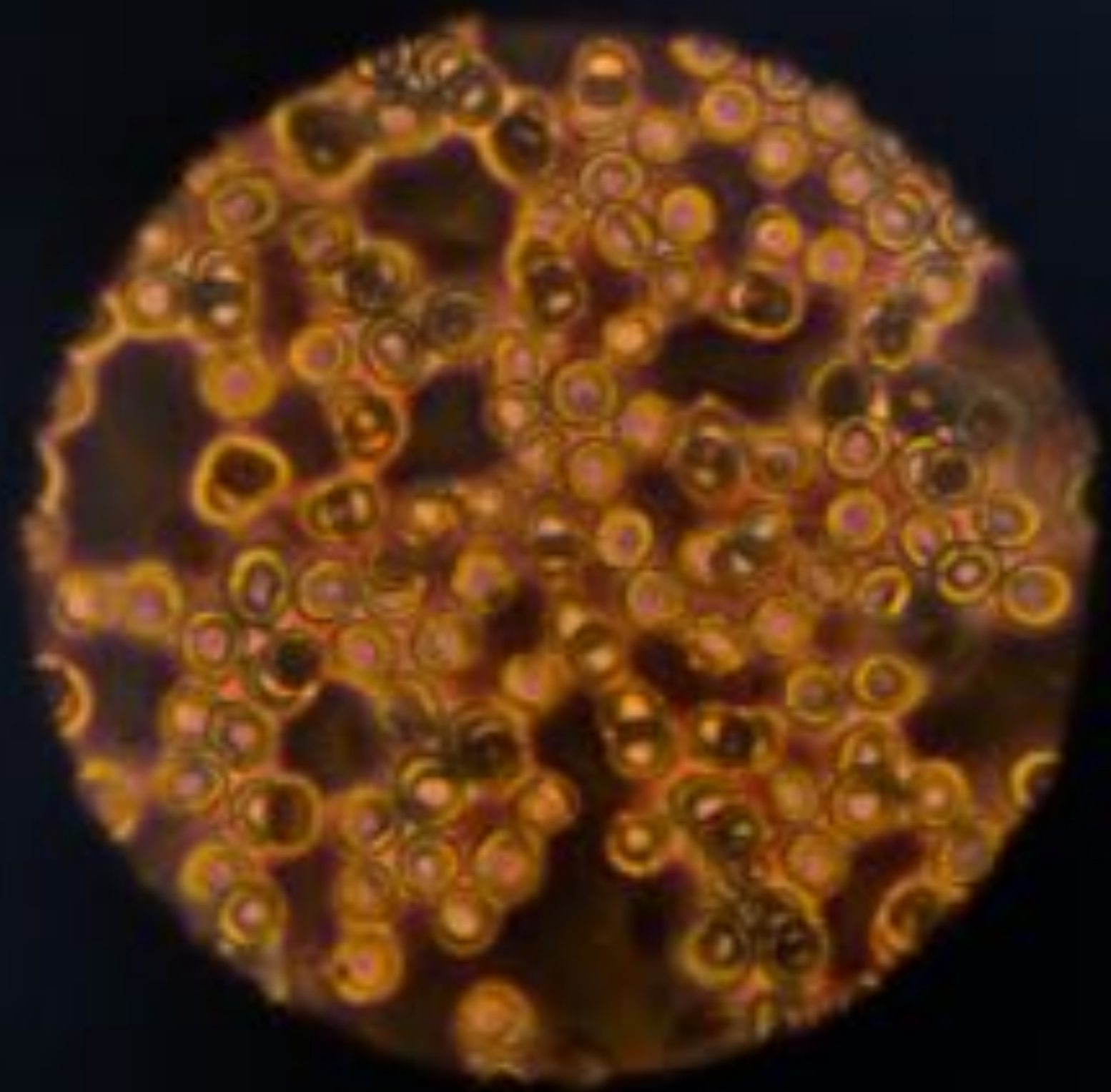
TESTING

AUTOMATED TESTING

ORACLE BASELINE VALIDATION TOOL (NOT SUPPORTED)

RITTMAN MEAD REGRESSION TESTING TOOL

CREATE TESTING SUITE



REMOVE UNUSED CONTENT



USER TRACKING



GET READY FOR THE UPGRADE

CONTENT

SERVER

STARTING POINT

PATH



FREE
OAS
ASSESSMENT

[HTTP://RITT.MD/OAS](http://ritt.md/oas)





OAS
UPGRADE
JUMP-START



@FTISIOT

UPGRADE TO OAS

WHY AND HOW

FRANCESCO TISIOT

ANALYTICS TECH LEAD - RITTMAN MEAD

rittmanmead
A DATA AND ANALYTICS COMPANY

